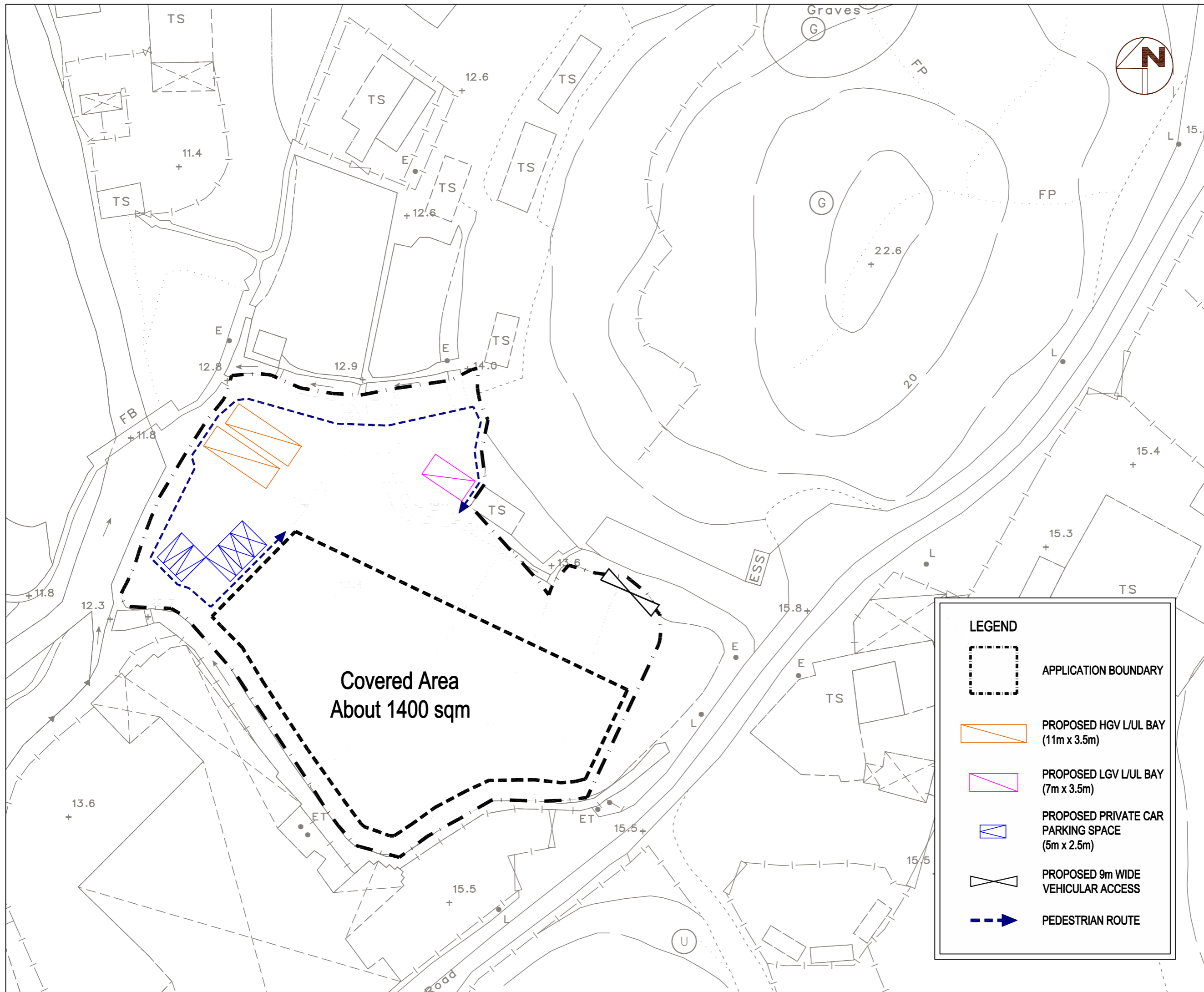

Appendix | V

Figure 2.2 of the Revised Traffic Review Report and Swept Path Analysis



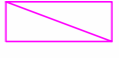
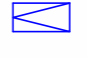
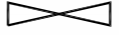

Traffic Review for Section 16 Planning Application of a proposed temporary logistics centre for a period of three years and filling of land and pond at Lots 267 (Part) and 268 (Part) in D.D. 84, Lots 481 S.A (Part) and 481 RP (Part) in D.D. 87, and adjoining Government Land, Ping Che, Ta Kwu Ling, New Territories

TRAFFIC MANAGEMENT MEASURES

FIGURE 2.2



LEGEND

-  APPLICATION BOUNDARY
-  PROPOSED HGV L/UL BAY (11m x 3.5m)
-  PROPOSED LGV L/UL BAY (7m x 3.5m)
-  PROPOSED PRIVATE CAR PARKING SPACE (5m x 2.5m)
-  PROPOSED 9m WIDE VEHICULAR ACCESS
-  PEDESTRIAN ROUTE

Scale : 1:500 (A3)

Date : AUG 2024

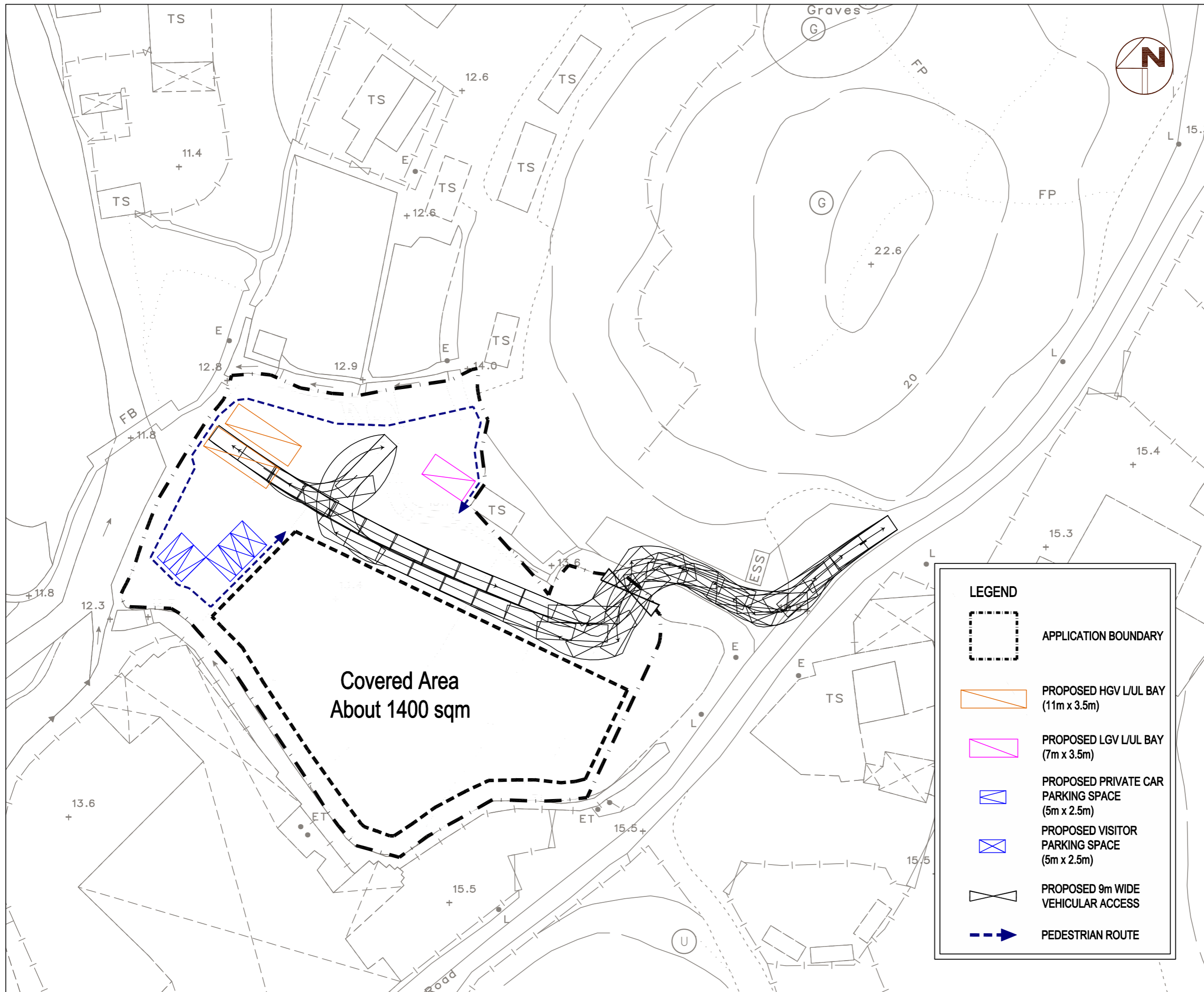
Rev. : C

AXON
CONSULTANCY
<http://www.axonhk.com>

Traffic Review for Section 16 Planning Application of a proposed temporary logistics centre for a period of three years and filling of land and pond at Lots 267 (Part) and 268 (Part) in D.D. 84, Lots 481 S.A (Part) and 481 RP (Part) in D.D. 87, and adjoining Government Land, Ping Che, Ta Kwu Ling, New Territories

SWEPT PATH ANALYSIS FOR 11m HEAVY GOOD VEHICLE

FIGURE SP-01



Covered Area
About 1400 sqm

LEGEND	
	APPLICATION BOUNDARY
	PROPOSED HGV L/UL BAY (11m x 3.5m)
	PROPOSED LGV L/UL BAY (7m x 3.5m)
	PROPOSED PRIVATE CAR PARKING SPACE (5m x 2.5m)
	PROPOSED VISITOR PARKING SPACE (5m x 2.5m)
	PROPOSED 9m WIDE VEHICULAR ACCESS
	PEDESTRIAN ROUTE

Scale : 1:500 (A3)

Date : AUG 2024

Rev. : C

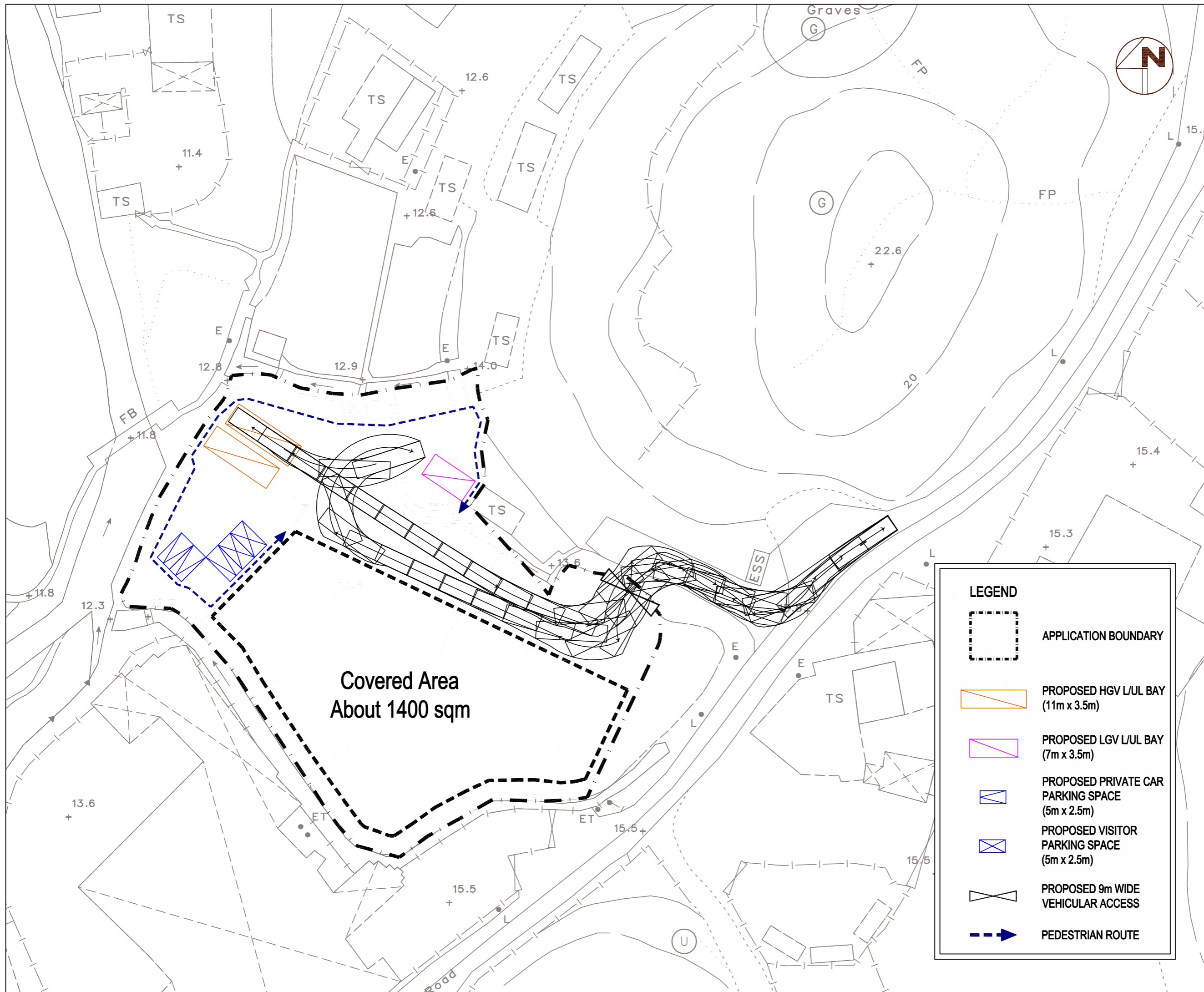
AXON
CONSULTANCY
<http://www.axonhk.com>

X:\PROJECT\131037 S16 FOR PROPOSED TEMPORARY LOGISTIC CENTRE AT PING CHE -TAU\DATA\DRAWING\REPORT DRAWING\2024-08-08\FIG 2.2C -TRAFFIC MANAGEMENT MEASURES.DWG

Traffic Review for Section 16 Planning Application of a proposed temporary logistics centre for a period of three years and filling of land and pond at Lots 267 (Part) and 268 (Part) in D.D. 84, Lots 481 S.A (Part) and 481 RP (Part) in D.D. 87, and adjoining Government Land, Ping Che, Ta Kwu Ling, New Territories

SWEPT PATH ANALYSIS FOR 11m HEAVY GOOD VEHICLE

FIGURE SP-02



LEGEND	
	APPLICATION BOUNDARY
	PROPOSED HGV L/UL BAY (11m x 3.5m)
	PROPOSED LGV L/UL BAY (7m x 3.5m)
	PROPOSED PRIVATE CAR PARKING SPACE (5m x 2.5m)
	PROPOSED VISITOR PARKING SPACE (5m x 2.5m)
	PROPOSED 9m WIDE VEHICULAR ACCESS
	PEDESTRIAN ROUTE

Scale : 1:500 (A3)

Date : AUG 2024

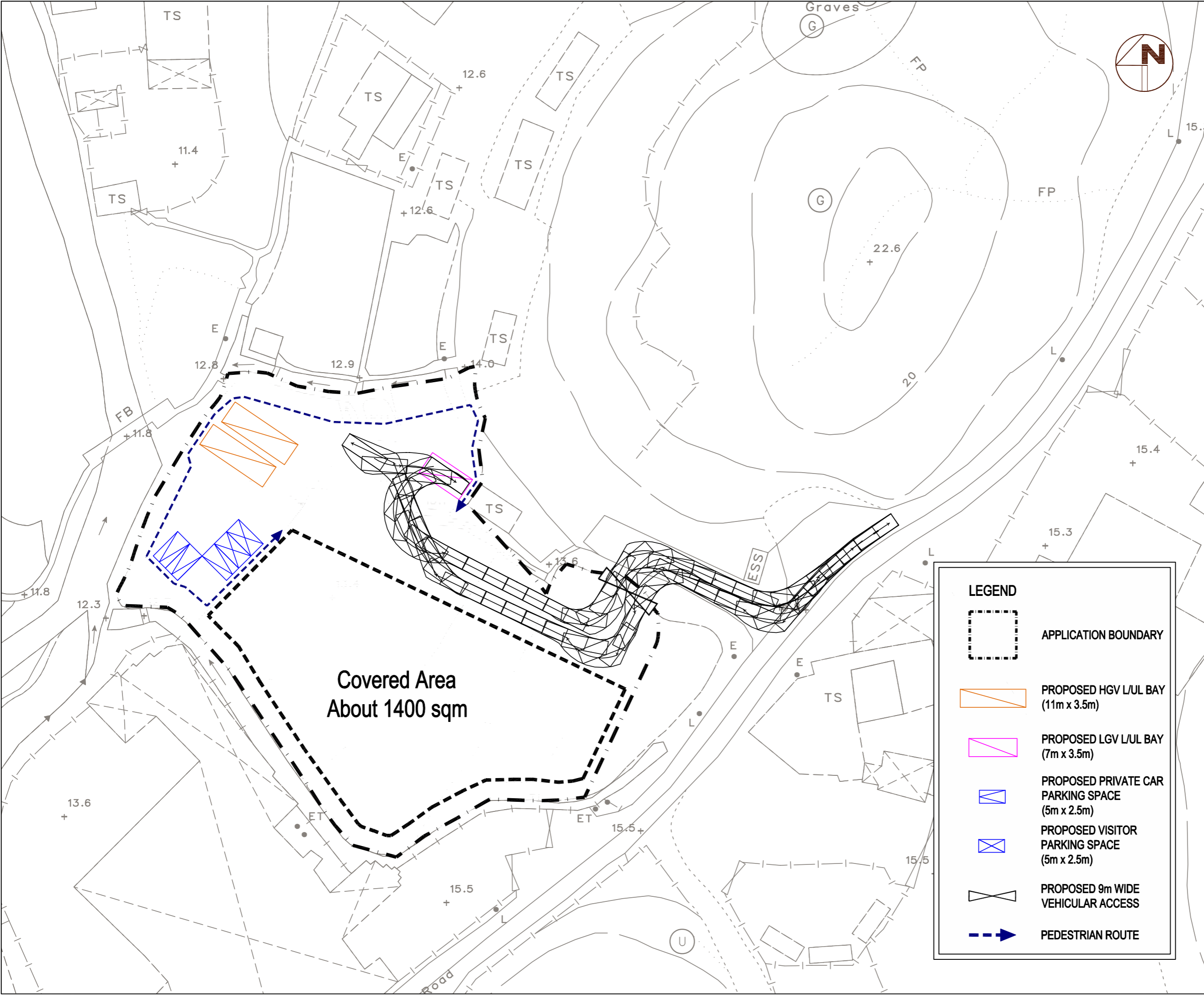
Rev. : C

AXON
CONSULTANCY
<http://www.axonhk.com>

Traffic Review for Section 16 Planning Application of a proposed temporary logistics centre for a period of three years and filling of land and pond at Lots 267 (Part) and 268 (Part) in D.D. 84, Lots 481 S.A (Part) and 481 RP (Part) in D.D. 87, and adjoining Government Land, Ping Che, Ta Kwu Ling, New Territories

SWEPT PATH ANALYSIS FOR 7m LIGHT GOOD VEHICLE

FIGURE SP-03



LEGEND	
	APPLICATION BOUNDARY
	PROPOSED HGV L/UL BAY (11m x 3.5m)
	PROPOSED LGV L/UL BAY (7m x 3.5m)
	PROPOSED PRIVATE CAR PARKING SPACE (5m x 2.5m)
	PROPOSED VISITOR PARKING SPACE (5m x 2.5m)
	PROPOSED 9m WIDE VEHICULAR ACCESS
	PEDESTRIAN ROUTE

Scale : 1:500 (A3)

Date : AUG 2024

Rev. : C

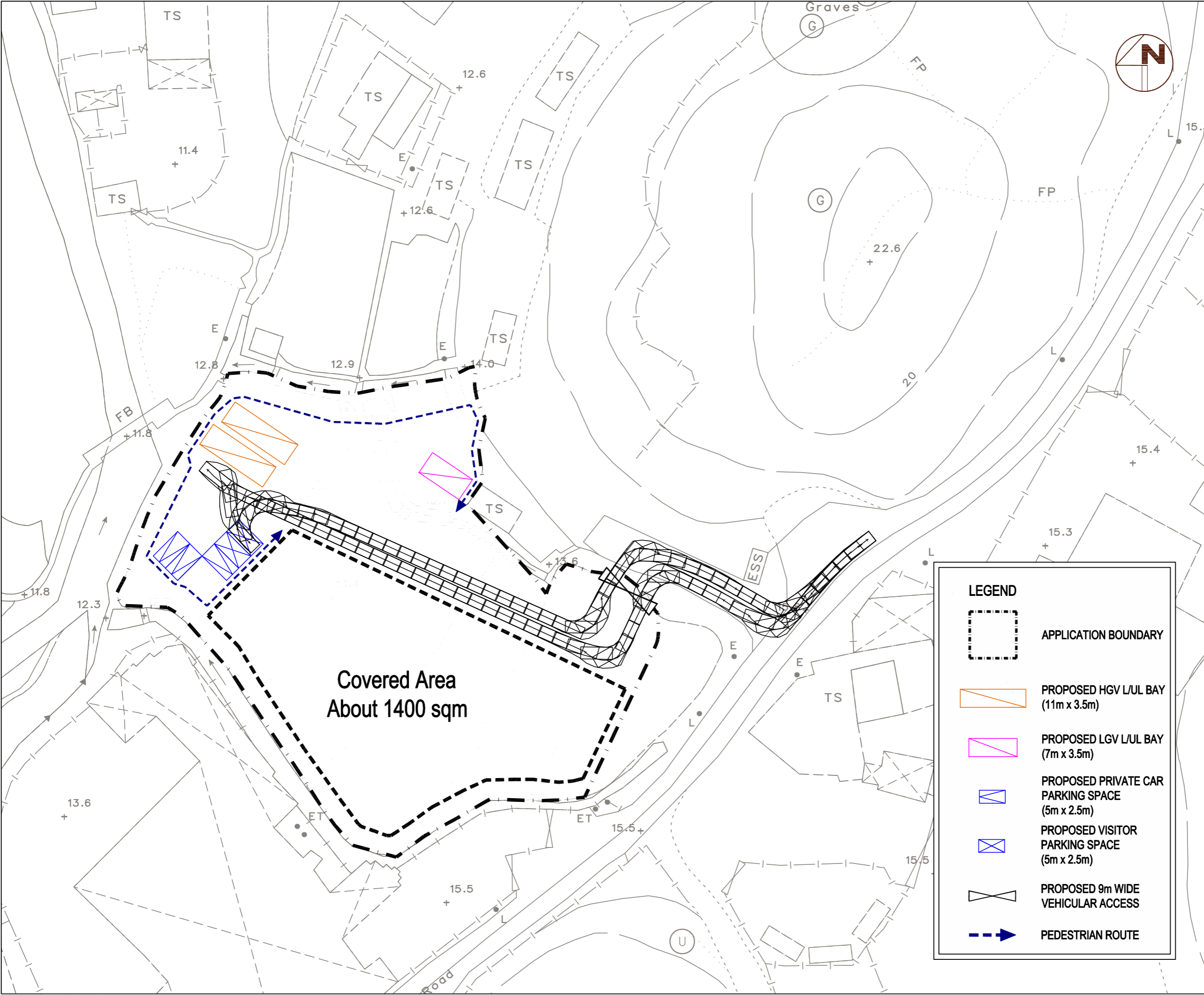
AXON
CONSULTANCY
<http://www.axonhk.com>

X:\PROJECT\131037_S16 FOR PROPOSED TEMPORARY LOGISTIC CENTRE AT PING CHE -1\AUDIT\DRAWING\REPORT DRAWING\2024-08-08\FIG 2.2C -TRAFFIC MANAGEMENT MEASURES.DWG

Traffic Review for Section 16 Planning Application of a proposed temporary logistics centre for a period of three years and filling of land and pond at Lots 267 (Part) and 268 (Part) in D.D. 84, Lots 481 S.A (Part) and 481 RP (Part) in D.D. 87, and adjoining Government Land, Ping Che, Ta Kwu Ling, New Territories

SWEPT PATH ANALYSIS FOR 5m PRIVATE CAR

FIGURE SP-04



**Covered Area
About 1400 sqm**

LEGEND	
	APPLICATION BOUNDARY
	PROPOSED HGV L/UL BAY (11m x 3.5m)
	PROPOSED LGV L/UL BAY (7m x 3.5m)
	PROPOSED PRIVATE CAR PARKING SPACE (5m x 2.5m)
	PROPOSED VISITOR PARKING SPACE (5m x 2.5m)
	PROPOSED 9m WIDE VEHICULAR ACCESS
	PEDESTRIAN ROUTE

Scale : 1:500 (A3)

Date : AUG 2024

Rev. : A

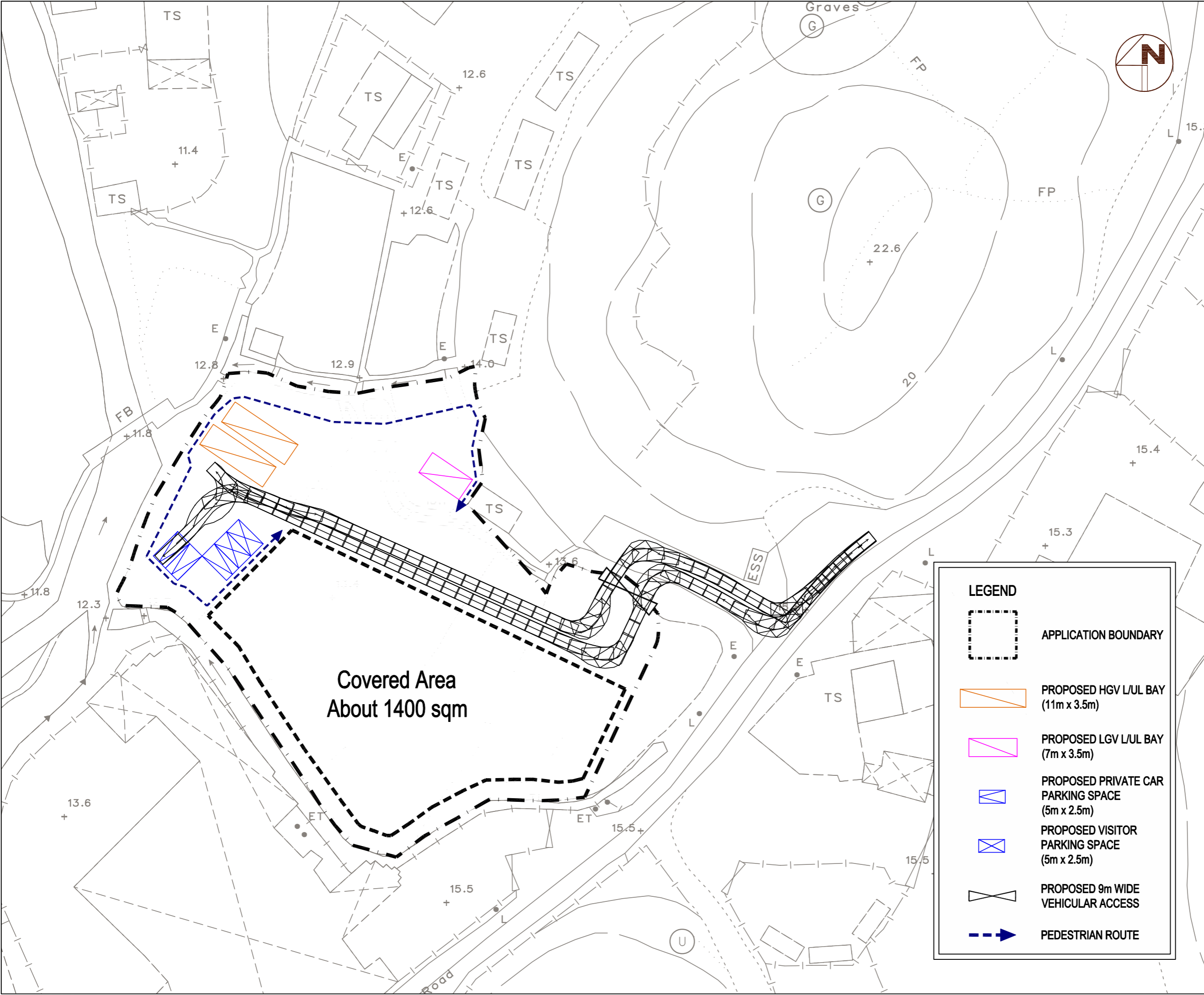
AXON
CONSULTANCY
<http://www.axonhk.com>

X:\PROJECT\131037 S16 FOR PROPOSED TEMPORARY LOGISTIC CENTRE AT PING CHE -1\AUDIT\DRAWING\REPORT DRAWING\2024-08-08\FIG 2.2C -TRAFFIC MANAGEMENT MEASURES.DWG

Traffic Review for Section 16 Planning Application of a proposed temporary logistics centre for a period of three years and filling of land and pond at Lots 267 (Part) and 268 (Part) in D.D. 84, Lots 481 S.A (Part) and 481 RP (Part) in D.D. 87, and adjoining Government Land, Ping Che, Ta Kwu Ling, New Territories

SWEPT PATH ANALYSIS FOR 5m PRIVATE CAR

FIGURE SP-05



**Covered Area
About 1400 sqm**

LEGEND	
	APPLICATION BOUNDARY
	PROPOSED HGV L/UL BAY (11m x 3.5m)
	PROPOSED LGV L/UL BAY (7m x 3.5m)
	PROPOSED PRIVATE CAR PARKING SPACE (5m x 2.5m)
	PROPOSED VISITOR PARKING SPACE (5m x 2.5m)
	PROPOSED 9m WIDE VEHICULAR ACCESS
	PEDESTRIAN ROUTE

Scale : 1:500 (A3)

Date : AUG 2024

Rev. : A



X:\PROJECT\131037 S16 FOR PROPOSED TEMPORARY LOGISTIC CENTRE AT PING CHE -1\AUDIT\DRAWING\REPORT DRAWING\2024-08-08\FIG 2.2C -TRAFFIC MANAGEMENT MEASURES.DWG